



Holland Park  
State School



# Music Program Parent Handbook



## INTRODUCTION

*“All children can derive considerable fulfillment and enjoyment from music education, not only those who show a particular talent. The skills, concepts and attitudes should be those that benefit them not only during their schooling, but also in the years beyond. Music programs that provide opportunities for children to be actively involved in a wide range of musical experiences are more likely to develop in them an understanding or and sensitivity towards music, giving them a better chance to find meaning in music and become aware of the value of music in their own lives, as well as the lives of others.”*

(Designing an Instrumental Music Program – Curriculum guide p3)

## RELEVANT EDUCATION QUEENSLAND DOCUMENTS INSTRUMENTAL MUSIC PROGRAM

### Instrumental Music Program – Principles and Policy Statement

<https://education.qld.gov.au/curriculum/stages-of-schooling/instrumental-music-program/instrumental-music-program-policy>

### Music Curriculum 2.1

<https://education.qld.gov.au/curriculum/Documents/instrumental-music-curriculum.pdf>

## TABLE OF CONTENTS

Staffing	4
Program Summary	5
Musical Instruments Offered at HPSS	6
Commitment	7
Communication	9
Selection of New Students: Instrumental Music	10
Instrumental Music costs	11
School Instruments	12
Withdrawal from the Program	14
Performances	14
Uniform	14
Ensembles	15
<i>String Ensembles</i>	15
<i>Concert Band</i>	16
<i>Choirs</i>	16
Workshops	17
Recommended Suppliers and Repairers	17

## STAFFING

### **Jennifer Bairstow**

Deputy Principal

Email – [jbair51@eq.edu.au](mailto:jbair51@eq.edu.au)

### **Jan Stuart-Street**

Strings Teacher

Conductor – Beginner Strings, Junior Strings, Senior Strings

Email – [jstua58@eq.edu.au](mailto:jstua58@eq.edu.au)

### **Toby Stockdale**

Band Teacher

Conductor – Concert Band

Email – [tstoc2@eq.edu.au](mailto:tstoc2@eq.edu.au)

### **Rose Boylan- Ascione**

Classroom Music Teacher

Conductor – Senior Choir, Year 1 Singing Club

Email – [rboyl37@eq.edu.au](mailto:rboyl37@eq.edu.au)

### **Nicole Perry**

Classroom Music Teacher

Conductor – Junior Choir

Email- [ncrew3@eq.edu.au](mailto:ncrew3@eq.edu.au)

## CO-CURRICULAR MUSIC PROGRAM

Music is a powerful communication experience that enriches our lives daily. As well as bringing people together, making music has been proven to assist in developing memory, reasoning, personal organisation and time management skills.

Holland Park State School offers many opportunities to be involved in music, providing students with the opportunity to partake in a number of music programs, outside of their regular classroom music lessons. These include the Choral program and the Instrumental Music program.

This handbook outlines the aims, expectations and details of the Holland Park State School Music program. The privilege of being part of the music program carries with it certain responsibilities which should be met to succeed in Instrumental music study or choral involvement. If you require any information that has not been addressed in the handbook, please speak to the staff as outlined in the first page.

### Program Objectives

- To provide opportunities for students to experience performing in an ensemble (orchestra or band) or choir.
- To provide a valuable and enriching dimension to enhance the school's classroom music curriculum.
- Instrumental Music also provides opportunities for students to develop instrumental music skills via weekly group tuition during the school day and through daily personal practice.
- The choral program also provides opportunities for students to develop vocal skills via weekly rehearsals.

### Choir

The Choral Program provides all students with a positive choral experience. From the most inexperienced singer through to highly accomplished and well-trained performers, students are able to be part of a progressive Choral Program that caters for vocalists of all levels. Students do not have to audition for the choirs and can join choirs from Year 1. Student participation in the choral program requires a full year commitment.

## Instrumental Music

Education Queensland provides the Instrumental Music program in our school, with tuition provided free of charge. At Holland Park State School, tuition is provided on string, brass, woodwind and percussion instruments. Selected students can join the Strings program from Years 3-6, and the Band program from Year 4-6. **If your child accepts a place in the strings program, they are then ineligible to join the band program. Students are not able to withdraw from the strings program to later join the band program.**

In addition to attending a single weekly instrumental lesson, each Instrumental Music student is required to participate in an ensemble. As mandated in the Education Queensland curriculum, students cannot choose to only have lessons and not be part of the ensemble.

- Lessons are provided during school hours on String, Woodwind, Brass and Percussion instruments.
- Ensemble experience is provided through participating in String Ensembles, Concert Bands and other extension small ensembles outside of school hours or during lunch. Attendance at these groups is compulsory and an integral part of the Instrumental Music Program.

### MUSICAL INSTRUMENTS OFFERED AT HPSS

String instruments	Violin, Viola, Cello and Double Bass
Brass instruments	Trumpet, French horn, Trombone, Baritone, Euphonium, Tuba
Woodwind instruments	Flute, Clarinet, Bass Clarinet, Alto Saxophone and Tenor Saxophone
Percussion instruments	Glockenspiel, Xylophone, Snare Drum, Bass Drum, Cymbals, Triangle, Tambourine etc.



# COMMITMENT

At Holland Park we pride ourselves on the success of our co-curricular music program. The success can only be achieved through the dedication of, not only the students to their chosen program, but also their families.

Within both the Choral and Instrumental program there is an expectation that students will:

- Attend rehearsals on time and as required.
- Participate in all performances
- Display appropriate behaviour in all rehearsals and performances

Parents of children who are already involved in regular early morning training programs (e.g. swimming, tennis etc) or who participate in a significant number of extra-curricular activities need to consider carefully whether a commitment to the Music program is a suitable choice.

## **Choirs**

Joining a choir is a commitment to teamwork, practice, and excellence. We expect all members to attend rehearsals punctually and participate actively. Students sign up for choir, and a roll is taken at each rehearsal. Parents will be informed if students are not attending regularly and are expected to notify the director if their child is unable to attend. If a student is absent from a rehearsal or performance, an email needs to be sent to the conductor prior. We look forward to a harmonious and exciting year of singing together!

## **Instrumental Music**

Students who are part of the Instrumental Music Program have been chosen from a large number of children who were eager to join the program.

When students join the Instrumental Music program they commit to remaining in the program until the end of Year 6, or when the student departs Holland Park SS.

Students are not permitted to learn one instrument for a year, then change to a different instrument the following year. Through careful professional assessment and discussions, the teachers endeavour to give students the opportunity to learn an instrument that is of best fit to the individual student.

Whilst the school endeavours to give students the opportunity to learn a particular instrument, parents cannot demand to learn a particular instrument. Instrument placements are dependent on the student's suitability to the instrument and balance of instruments and types of instruments.

### **Summary of Student Expectations**

The Instrumental Music program is a skill-based program. To achieve a satisfactory level at any skill, effort is required.

Students must ensure that they:

- Practice regularly at home at least three times per week, including ensemble repertoire.
- Attend all lessons, rehearsals, workshops and performances
- Take care of the instrument. Students who are using school instruments, are to be responsible with their instrument care, both at home and at school.
- Bring required resources and equipment to lessons and rehearsals.
- Display appropriate behaviour at lessons, rehearsals and performances.

### **Summary of Parent Expectations**

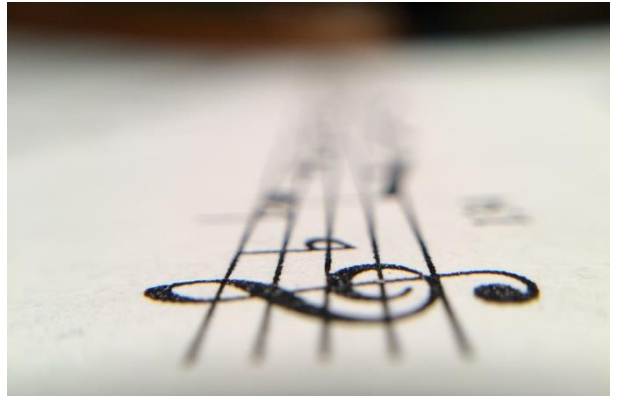
- Support and supervise (as necessary) regular home practice (generally 3 - 4 times a week for 10-15 minutes)
- Enable consistent attendance at lessons and rehearsals.
- Provide a safe place to practice (with music stand)
- Oversee the care of the instrument and regularly replace items as necessary (e.g. reeds, strings, sheet music, tutor books)
- Provide a safe place to store the instrument, keeping it clean and in working order
- Purchase/ provide your child with a suitable instrument after 12 months tuition (except as indicated above). Please note that, for string students, part sized instruments are used, and need to be upsized as students grow.
- Advise the Instrumental Teacher of child absence prior to lessons, rehearsals and performances.

If difficulties are being experienced in areas such as practicing, waning interest levels, instrument function or attendance, please contact the Instrumental Music teacher promptly via email to make an appointment to discuss.



## COMMUNICATION

Regular communication about Music Program activities (both choral and Instrumental Music) will be sent via email. This includes information such as rehearsal variations, upcoming performances, unexpected cancellations etc. If you require more direct contact with your child's teacher or conductor, please contact the school to make an appointment.



### **Communication – Instrumental Music Lessons**

As our Instrumental Music Program follows Education Queensland curriculum (offering weekly lessons and with students assessed on their instrument), communication will be more frequent and will be presented in various formats.

### **Homework**

Instrumental Music teachers set homework each week. Each Instrumental Teacher hands out homework in a different format, and your teacher will explain this further at the start of the year. This may be in digital format or paper format.

### **Assessment**

Students will complete one or two assessments each semester. Prior to this assessment, students will receive information outlining what is required for the assessment.

### **Progress Reports**

Students and parents will receive a formal progress report twice per year as part of their full school report, at the end of each semester. Should there be any concerns regarding your child's progress prior to formal reporting, parents will be notified by email or phone. The most common reasons for concern include lack of practice, irregular attendance, poor punctuality or attitude.

## **SELECTION OF NEW STUDENTS: INSTRUMENTAL MUSIC**

Unfortunately, due to the high demand and the limited resources available to the school, not all students who may wish to participate in this program can be accommodated. It is necessary therefore, to operate a selection process for admission to the program. This in turn, ensures balance to each ensemble.

Students are selected in accordance with the school's policy taking into account the balance of the ensemble program, the available time allocated to the school, and the suitability of the student. Factors influencing the student's suitability include:

- general musical ability,
- physical suitability – including size, strength and aptitude (including hand, arm, jaw alignment and mouth structures) noting that each instrument has different requirements
- ability to maintain regular, self-directed practice, and
- commitment to an ensemble.

Selection of new participants occurs in semester two of the year previous (students in Years 2 and 3). The Instrumental Music teachers, Specialist Classroom music teachers, Classroom teachers and administration are all actively involved in the recruitment and decision making on selection of students for the program.

Under Education Queensland's policy, children who take up an offer of in the strings program cannot be offered a place in the concert band part of the program (brass, woodwind and percussion instruments). Therefore, should a child be particularly keen to play a concert band instrument they need to forego an entry into the Strings program to give them the chance of an offer in the Concert Band program.

Any student coming from another state school who has already been in an Instrumental Music program (at their previous school) will be allowed to enter the program provided there is a position available in the program at their instrument level, however the loan of a school instrument may not be possible.

## INSTRUMENTAL MUSIC COSTS

Annual SRS (Music levy)	\$60
School Instrument Hire	\$140
Ensemble Folder	\$15
Incidental Costs	see below

Although lessons are offered free of charge there are still some fees involved in the program. Students participating in Instrumental Music pay an annual SRS (Student Resource levy) annually. This fee is used to cover extra resources and equipment such as photocopying, ensemble music, competition entry fees, music stands etc. Invoices will be issued in Term 1, 2025.

All students who are selected to be part of the Instrumental Music program will require an instrument for practice and lessons.

- School instruments are offered at a cost, generally for the first year with the exception of larger instruments. More information is given further into the handbook. Should a child be using their own instrument, this fee does not need to be paid.
- If you decide to purchase your own instrument from the start of the program, please contact the relevant Instrumental Music teacher for a list of brands.

An Ensemble Folder is required to be purchased and should last for the entirety of student's primary school years. These folders can be purchased from the Uniform shop.

### Incidental Costs

There are Incidental Costs associated with learning an instrument. These include tutor books, "accessories" (such as reeds, cork and valve grease, rosin), Folding Music Stand etc. As your child progresses, there will also be various points when parents may be expected to purchase new books or replace accessories.



You will be emailed specific instrument requirements once accepted into the program, however approximate starting costs are:

<b>INSTRUMENTS</b>	<b>APPROX COST</b>
<b>Strings:</b> <i>Violin, Viola, Cello, Bass</i>	\$190
<b>Woodwinds:</b> <i>Flute, Clarinet, Bass Clarinet, Alto Saxophone, Tenor Saxophone, Baritone Saxophone</i>	\$190
<b>Brass:</b> <i>Trumpet, Trombone, French Horn, Baritone, Euphonium, Trombone, Tuba</i>	\$110
<b>Percussion:</b>	\$500

## SCHOOL INSTRUMENTS

A limited number of school instruments are available for loan at a cost of \$140 per year. Instruments are available for differing loan periods as per the instrument (please see table below). At the end of the loan period parents will need to purchase an instrument.

One Year of tuition	Violin, Viola, Flute, Clarinet, Alto Saxophone, Trumpet, Trombone
Two years of tuition	Cello
Three or more years of tuition	Double Bass, Bass Clarinet, Tenor Saxophone, Baritone Saxophone, Euphonium, Baritone, French Horn, Tuba

Students who are using school instruments are responsible for their care at both home and school. If the student has been irresponsible, the parent will be expected to contribute to the cost of repairs.

A Loan Agreement form must be signed by parents before an instrument is issued to a student. The form must be fully completed and returned to the Business Services Manager at the Administration block. The loan form will remain current for the school year and students will be asked to return instruments at the completion of lessons in Term 4.

### **School Instrument Repairs**

Any school instrument that needs repair should be reported to the student's Instrumental Music teacher, who will organise for the instrument to be repaired. If a school instrument is damaged through negligence or carelessness (of the student), repair costs will become the responsibility of the student. In all circumstances the school will organise where the instrument goes for repair.

### **Instrument Insurance**

Privately owned instruments and school instruments on loan are not covered for any incidences whatsoever through the school's insurance policy.

School instruments on loan to students are covered by the department only in the following instances:

- Secured located at the student's residence – theft/ vandalism due to a break and enter; provided police are called and forcible entry is evident and proved.
- At the student's residence – fire, storm and flood
- Official excursions – loss or damage
- Classroom/ port racks during school time – theft.

School Instruments are not covered by the school's insurance for:

- Transit to/ from home and school (e.g. left on the bus)
- Accidental damage
- Unaccounted / unexplained loss
- Theft, fire or vandalism in home/ outside school.

**Parents are strongly advised to include instruments on household contents insurance to ensure full insurance coverage.**



## **WITHDRAWAL FROM THE PROGRAM**

Whilst the choral program can be somewhat flexible with student participation, the Instrumental Music program needs to minimize the number of withdrawals wherever possible due to ensemble balance. The withdrawal of one player / instrument can have a detrimental effect on the entire ensemble and consequently, the outcome for other students. Therefore, withdrawal is not permitted without direct consultation with the teaching and leadership team. Withdrawals are rare and approved only in extenuating circumstances.

## **PERFORMANCES**

A major focus of the Music Program is to develop interest and encourage achievement. Throughout each year opportunities are provided for performances both within the school and at external community venues. These performance opportunities often help with developing interest, encouraging achievement, and are a chance for students to showcase their hard work and progress. Performance and competition opportunities include assemblies, Music nights, church fetes, Fanfare, Queensland Youth Music Awards and Music Fest.

Attendance at performances is mandatory – the group's performance relies on a balanced ensemble, and every student is required.

Family and friends are encouraged to attend as many performances as possible, and your interest and support is invaluable to your child. In return, our performances are the way we acknowledge you and the way we share the love and language of music.

## **UNIFORM**

Students (both Instrumental Music and Choir) perform in the Holland Park State School Formal Uniform (see school website for uniform requirements), and hair is to be tied back neatly.

## **ENSEMBLES**

At Holland Park State School, we have ten different ensembles across our three programs. With the exception of Beginner Strings, all other ensembles rehearse weekly with their respective conductor and are not auditioned. Our different choirs can be found in the Choir section. Below are the Instrumental Music ensembles.

### **STRING ENSEMBLES**

#### **BEGINNER STRINGS – Jan Stuart-Street**

Beginner Strings is the very first ensemble our string players join. Rehearsals for this ensemble are two to three weeks prior to concerts. They play in unison as they learn to listen, play together and focus on playing in tune and with good posture.

#### **JUNIOR STRINGS – Jan Stuart-Street**

**Rehearses Mondays 1<sup>st</sup> break**

Junior Strings is an ensemble for students in year 4 who are in their second year of playing. Occasionally advanced year 3 students will also be invited to join this ensemble. Students play predominantly in two or three parts. The music for Junior Strings is centred around moving together rhythmically, and focusing on students learning to watch and follow their conductor.

#### **SENIOR STRINGS – Jan Stuart-Street**

**Rehearses Mondays 7:30-8:30am**

Senior Strings is our most advanced ensemble consisting predominantly of students in Years 5 and 6 (with the occasional advanced Year 4 student). This ensemble works on complex part-work with intricate melodies and harmonies. They play pieces in a range of both major and minor key signatures, including some pieces from popular films.

## **CONCERT BAND**

### **CONCERT BAND – Toby Stockdale**

**Rehearses Wednesdays 7:30-8:30am**

Concert Band is comprised predominantly of students in Years 5 and 6. Year 4 students join the band in their second semester of learning. Students build their ensemble skills, focusing on the finer details of watching the conductor, dynamics, articulations, and explores a wider range of key signatures, time signatures and styles.

## **CHOIRS**

At Holland Park State School we have three choirs. Students are encouraged to bring a folder for sheet music and a drink bottle to rehearsals.

### **YEAR 1 SINGING CLUB – Rose Boylan-Ascione**

**Rehearsals: Mondays 11:15-11:40am (First Break)**

The Year 1 Singing Club is a fun and informal vocal club for our youngest singers. This club focuses on improving pitch, learning new songs, and fostering a love for music in a relaxed and enjoyable environment. It's an excellent introduction to group singing and a great way to build confidence in young vocalists.

### **JUNIOR CHOIR – Nicole Perry**

**Rehearsals: Fridays 8:15-8:45am**

The Junior Choir is designed for younger students in Years 2 and 3 who love to sing and want to develop their musical abilities. This choir emphasizes the basics of singing, including pitch, rhythm, and expression, through fun and engaging songs.

### **SENIOR CHOIR – Rose Boylan-Ascione**

**Rehearsals: Thursdays 7:45-8:45am**

The Senior Choir offers students in Years 4 to 6 an opportunity to develop their vocal skills and experience the joy of singing in a group. Rehearsals focus on a diverse repertoire, vocal techniques, and performance preparation.



## WORKSHOPS

Education Queensland organises annual music workshops for students in Years 3, 4 and 6, and are held in an external venue. Students from various schools meet together and benefit from specialist group tuition, band/ ensemble rehearsals and choir rehearsals.

Invitations to other workshops run by external groups (non-EQ) may also be offered to students during the program.

## RECOMMENDED REPAIRERS AND SUPPLIERS

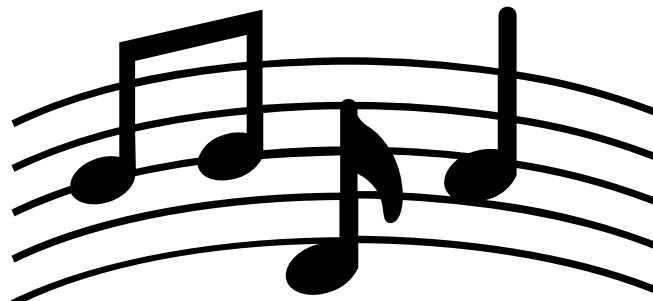
Below is a list of reputable companies from which you can purchase your Instrumental music books and accessories from. These suppliers are also companies we also recommend for purchasing and repairing of instruments when you require. Again, please do not purchase an instrument without discussing with your Instrumental teach first, and getting a list of Recommended Brands.

## STRING RETAILERS AND REPAIRERS

<p><b>Animato Strings</b> Unit 5/ 789 Kingsford Smith Drive Eagle Farm Qld 4009 Ph: (07) 3876 3877 Website: <a href="http://www.animato.com.au">www.animato.com.au</a> E: <a href="mailto:animato789@gmail.com">animato789@gmail.com</a></p>	<p><b>Simply for Strings</b> 78 Enoggera Terrace Red Hill Qld 4059 Ph: 1300 739 293 or 3368 3666 Website: <a href="http://www.simplyforstrings.com.au">www.simplyforstrings.com.au</a> E: <a href="mailto:hello@simplyforstrings.com.au">hello@simplyforstrings.com.au</a></p>
<p><b>The Violin Studio</b> 29 Lamington Terrace Dutton Park Qld 4102 Ph: (07) 3844 6090 Website: <a href="http://www.theviolinstudio.com">www.theviolinstudio.com</a> E: <a href="mailto:home8@theviolinstudio.com">home8@theviolinstudio.com</a></p>	<p><b>Vivace Violins</b> 2048 Logan Rd Upper Mt Gravatt Qld 4122 Ph: (07) 3849 7099 Website: <a href="http://www.musicexpress.com.au">www.musicexpress.com.au</a> E: <a href="mailto:violin@vivaceviolins.com.au">violin@vivaceviolins.com.au</a></p>
<p><b>Ian Clarke Violins</b> Bundara, Biddeston Toowoomba Qld Ph: (07) 4691 6282 Website: <a href="http://www.clarkeviolins.com">www.clarkeviolins.com</a> E: <a href="mailto:clarian@gmail.com">clarian@gmail.com</a></p>	<p><b>John Simmers Violins</b> 20 Argyle Street Red Hill Qld 4059 Ph: (07) 3368 3866 Website: <a href="http://www.simmersviolins.com.au">www.simmersviolins.com.au</a> E: <a href="mailto:info@simmersviolins.com.au">info@simmersviolins.com.au</a></p>

## WOODWIND, BRASS AND PERCUSSION RETAILERS AND REPAIRERS

<p><b>Other Music Australia</b>          PO Box 24          Kippa-Ring Qld 4021          Ph: 0488 668 742          Website: <a href="http://www.othermusic.com.au">www.othermusic.com.au</a>          E: <a href="mailto:info@othermusic.com.au">info@othermusic.com.au</a></p>	<p><b>Brisbane Brass &amp; Woodwind – BLOW</b>          3/149 Musgrave Road          Red Hill Qld 4059          Ph: (07) 3368 1106          Website: <a href="http://www.blowwinds.com.au/">www.blowwinds.com.au/</a>          E: <a href="mailto:info@blowwinds.com.au">info@blowwinds.com.au</a></p>
<p><b>Woods Music</b> (<i>formerly Woods Wind and Brass</i>)          Unit 4 88 Flinders Parade          North Lakes Qld 4509          Ph: 1300 378 452          Website: <a href="http://www.woodsmusic.com.au/">www.woodsmusic.com.au/</a>          E: <a href="mailto:info@woodsmusic.com.au">info@woodsmusic.com.au</a></p>	<p><b>Vivace Music</b>          36-38 Compton Road          Woodridge Qld 4114 (<i>Opposite Bunnings</i>)          Ph: (07) 3090 4268          Website: <a href="http://www.vivacemusic.com.au">www.vivacemusic.com.au</a>          E: <a href="mailto:mega@vivacemusic.com.au">mega@vivacemusic.com.au</a></p>
<p><b>Brass Music Specialists</b>          90 Appel Street          Graceville Qld 4075          Ph: (07) 3278 1311          Website: <a href="http://www.brassmusic.com.au/">www.brassmusic.com.au/</a>          E: <a href="mailto:brass@brassmusic.com.au">brass@brassmusic.com.au</a></p>	<p><b>Drew Niemeyer: Woodwind Instrument Repairer</b>          3/47 Douglas Street          Greenslopes Qld 4120          Ph: 0435 005 345          Website: <a href="mailto:drew@orchestralwind.com">drew@orchestralwind.com</a></p>
<p><b>Better Sounds Australia</b>          34 Centenary Place          Logan Village Qld 4207          Ph: (07) 5546 3711          Website: <a href="http://www.bettersounds.com.au">www.bettersounds.com.au</a></p>	



# The Benefits of Music Education

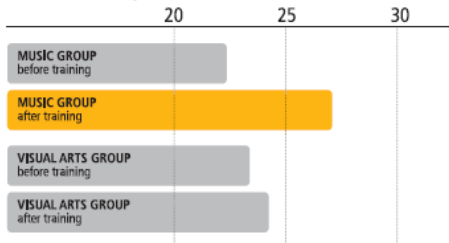
**NEUROSCIENTISTS HAVE DEMONSTRATED** that learning to play an instrument or sing leads to changes in a child's brain that make it more likely they will reach their full cognitive and academic potential.



## SPEECH AND READING

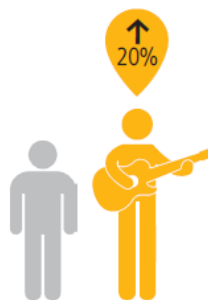
Young children taking music lessons showed dramatic improvement in their verbal intelligence after only four weeks of music training.<sup>1</sup>

Raw Vocabulary Score



## ACADEMIC SUCCESS

The quality of a child's music education is linked to their academic achievement.<sup>2</sup>



Elementary school students in higher quality music education programs had **20% improvement** in standardized tests of English and math.<sup>2</sup>

## COGNITIVE BENEFITS OF MUSIC EDUCATION

**WORKING MEMORY**

Individuals who are musically trained show better working memory abilities than those who are not. Working memory allows us to remember things and is crucial to mental arithmetic and reading comprehension.<sup>4</sup>

**CREATIVITY**

Scientists found a marked difference in communication between the right and left sides of the brain, which foster creativity, in individuals with musical training than in those without.<sup>5</sup>

**IQ**

In a study conducted through the University of Toronto, researchers showed greater increases in full-scale IQ scores among children in music lessons versus children in drama lessons or no extra lessons at all.<sup>3</sup>

“The theory of relativity occurred to me by intuition, and music is the driving force behind this intuition. My parents had me study the violin from the time I was six. My new discovery is the result of musical perception.” **Albert Einstein**

